


**2022-2023**

ANNUAL  
**REPORT**

Bremer County Health Department 

---

  
(319) 352-0082

  
[healthdept@co.bremer.ia.us](mailto:healthdept@co.bremer.ia.us)

# ABOUT BCHD

## OUR MISSION

The Bremer County Health Department promotes, protects, and preserves health through leadership, service, education, prevention practices, and partnerships.

## OUR VISION

Building a Healthier Bremer County

### OUR STAFF POSITIONS BY THE NUMBERS



Administrator



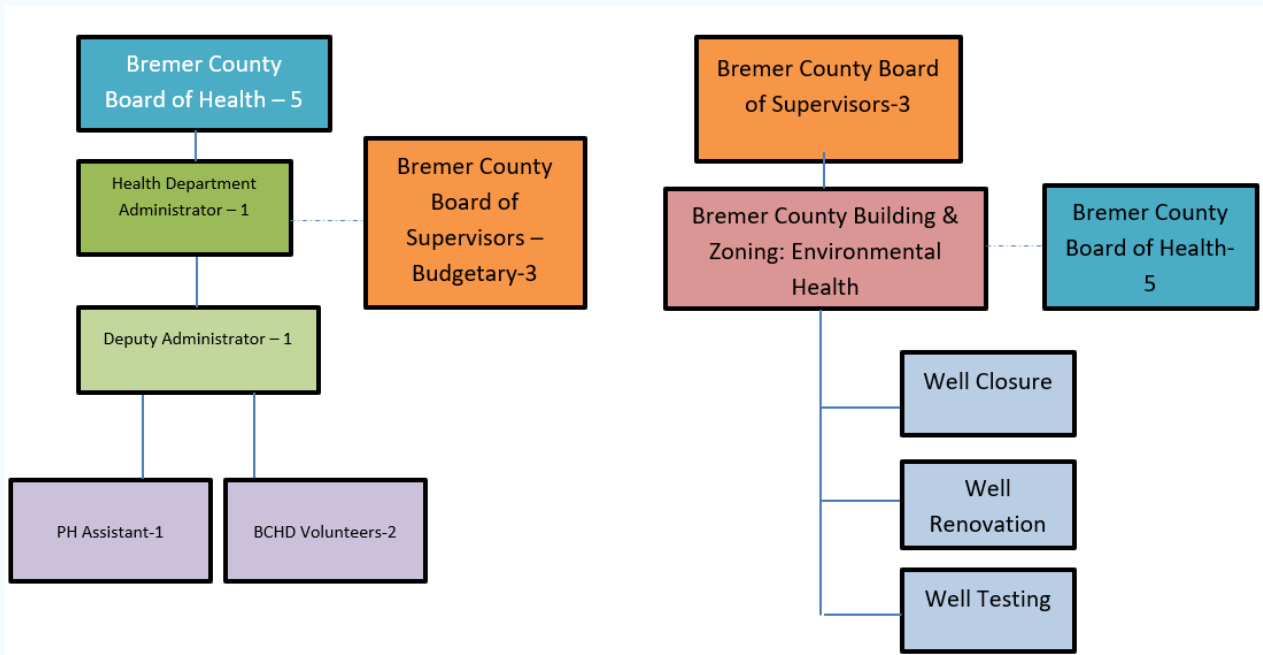
Deputy Administrator/  
Public Health Nurse



Support Staff

### BOARD OF HEALTH MEMBERS

- Courtney Bochmann, DO
- Amanda Gesme, LMHC
- Dewey Hildebrandt
- Joe Sampson, DVM
- Sally Yungtum, RN



# BCHD SERVICES

## ORGANIZATIONAL SERVICES

- Backbone functions of all internal operations
- Fiscal management of grants, fees, and contracts
- Customer service
- Quality improvement
- Performance management



## CHRONIC & COMMUNICABLE DISEASE

- Chronic disease
- Communicable disease investigation
- Immunizations
- Tuberculosis and latent tuberculosis direct observed therapy



## EMERGENCY PREPAREDNESS & PANDEMIC RESPONSE

- Public health emergency preparedness
- COVID-19
- Influenza



## COMMUNITY HEALTH/HEALTH PROMOTION

- Community health assessment
- Community health improvement planning
- Food insecurity
- Foot clinics
- Medical equipment loan closet
- Opioid misuse prevention



# BCHD FISCAL YEAR HIGHLIGHTS

## CHRONIC DISEASE

Improving the health of Bremer County citizens through the prevention of type 2 diabetes.

### THE NATIONAL DIABETES PREVENTION PROGRAM

- 12-month evidence-based lifestyle change program where prediabetic participants learn how to make sustainable lifestyle changes to prevent type 2 diabetes.
- Goals of the program:
  - 5-7% weight loss over 12 months
  - 150 minutes per week of physical activity
  - Overall maintainable lifestyle changes in fitness and nutrition.

#### FY23 Program Metrics

Participants	13
Cohorts	2
Attendances	182

#### FY23 Program Physical Activity (PA) Metrics

Metric	Months 0-6	Months 7-12
% Attended with PA	92.5%	100%
Sessions with > 150 PA min/week	68	48
% with > 150 PA min/week	63.6%	82.8%



# BCHD FISCAL YEAR HIGHLIGHTS

## COMMUNICABLE DISEASE

The BCHD is tasked with investigating certain communicable diseases by Iowa Administrative Code [641]-1 (139A) in order to prevent and control the spread of disease.

### Number of Communicable Disease Cases in FY23

<b>Communicable Disease Cases</b> (Not including COVID, STI, or TB)	21
<b>Latent TB DOT</b>	4

# BCHD FISCAL YEAR HIGHLIGHTS

## IMMUNIZATIONS

Vaccination, also referred to as immunization, is a safe, simple, and effective way to protect individuals against harmful diseases. The BCHD is enrolled in the Vaccine for Children Program to offer free or discounted vaccines to children who meet certain qualifications. The BCHD also offered the influenza and COVID-19 vaccines for all age groups in FY23.

**FY23 Immunizations Administered**

<b>Vaccine Type</b>	<b>7-10 yrs.</b>	<b>11-12 yrs.</b>	<b>13-18 yrs.</b>	<b>19-24 yrs.</b>	<b>25-44 yrs.</b>	<b>45-64 yrs.</b>	<b>65+ yrs.</b>	<b>TOTAL</b>
COVID19	0	0	2	1	11	25	5	44
Influenza-Seasonal	1	1	4	3	45	53	6	113
<b>TOTAL</b>	<b>1</b>	<b>1</b>	<b>6</b>	<b>4</b>	<b>56</b>	<b>78</b>	<b>11</b>	<b>157</b>
<b>PATIENT COUNT</b>	<b>1</b>	<b>1</b>	<b>4</b>	<b>4</b>	<b>45</b>	<b>59</b>	<b>9</b>	<b>123</b>



# BCHD FISCAL YEAR HIGHLIGHTS

## FOOD INSECURITY

Throughout FY23, BCHD partnered with Waverly-Shell Rock Area United Way and Waverly Health Center to provide fruit and vegetable vouchers to food insecure households in Bremer County through funding provided by the Bremer County Community Foundation.

### VOUCHER PROGRAM BY THE NUMBERS

- Approximate number of youth served (0-18)- **170**
- Approximate number of adults served (19+)- **200**
- Approximate amount redeemed in FY23- **\$2,774**



# BCHD FISCAL YEAR HIGHLIGHTS

## FOOT CLINICS

The BCHD offers foot clinics to individuals 55 years of age or older and/or individuals who are significantly disabled and unable to manage their own foot care.

Foot clinics are offered in the following Bremer County locations:

- Bremer County Health Department in Waverly
- Denver Public Library
- Janesville Public Library
- Plainfield Public Library
- Readlyn Community Library
- Sumner Public Library
- Tripoli Sweet Water Welcome Center

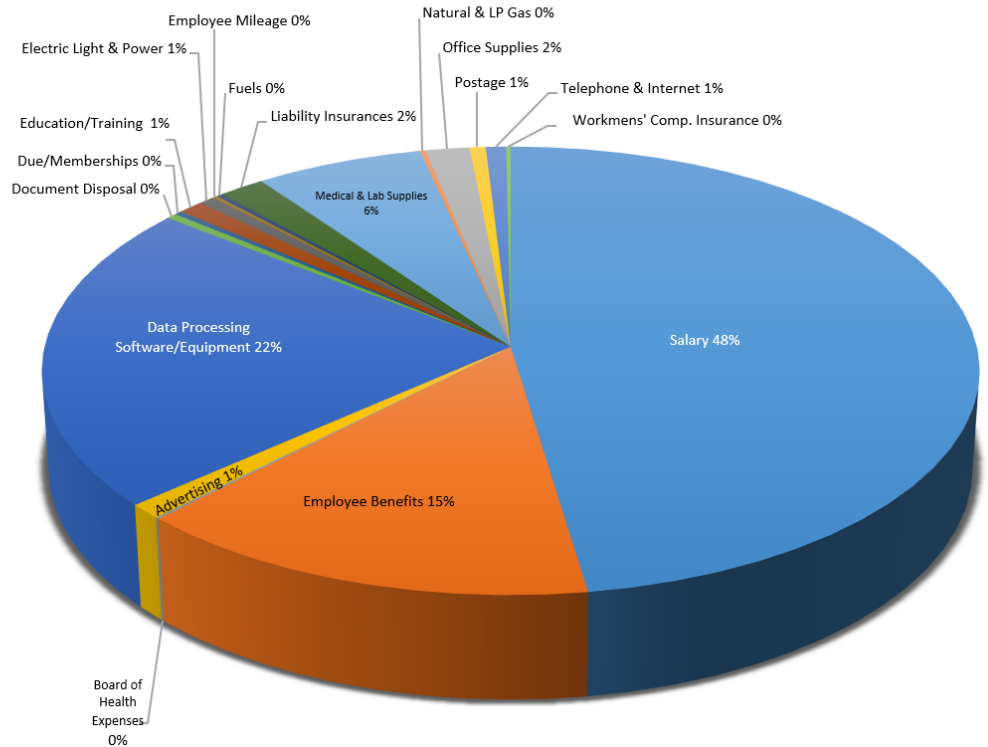
FY23 Foot Clinic Visits by Location								
	Plainfield	Waverly	Sumner	Tripoli	Denver	Janesville	Readlyn	TOTAL
<b>Jul-22</b>	1	11	6	7	3	0	2	<b>30</b>
<b>Aug-22</b>	5	22	10	5	4	0	5	<b>51</b>
<b>Sep-22</b>	5	3	3	4	3	2	0	<b>20</b>
<b>Oct-22</b>	5	22	4	4	2	3	6	<b>46</b>
<b>Nov-22</b>	0	9	6	4	3	1	3	<b>26</b>
<b>Dec-22</b>	6	17	5	3	2	0	6	<b>39</b>
<b>Jan-23</b>	0	13	7	6	3	2	3	<b>34</b>
<b>Feb-23</b>	5	9	5	5	4	1	5	<b>34</b>
<b>Mar-23</b>	0	10	9	3	4	0	4	<b>30</b>
<b>Apr-23</b>	3	20	11	5	4	0	6	<b>49</b>
<b>May-23</b>	2	10	8	6	4	0	4	<b>34</b>
<b>Jun-23</b>	3	16	10	3	2	0	3	<b>37</b>

# BCHD FY23 BUDGET

## Expenditures

Bremer County Health Department FY23  
July-June 2023

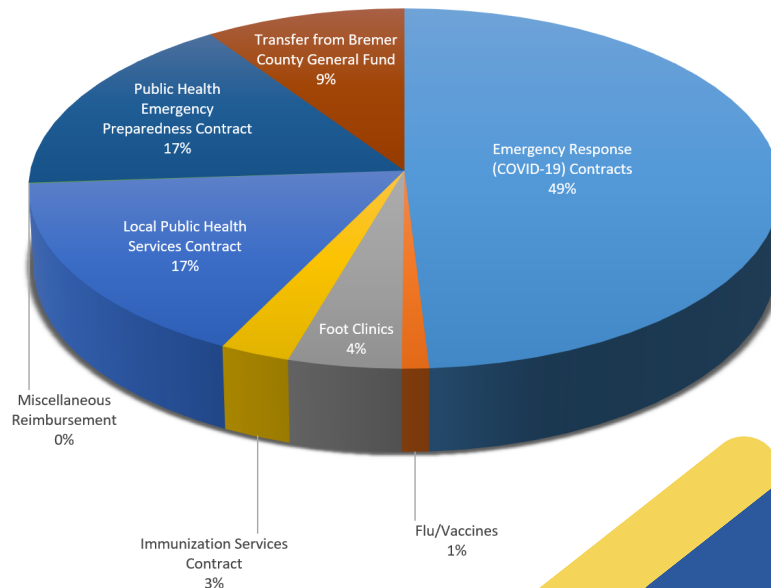
Expense Category	FY23 YTD	% of Total
Salary	\$174,743.14	47.23%
Employee Benefits	\$53,737.70	14.52%
Board of Health Expenses	\$470.45	0.13%
Advertising	\$3,890.64	1.05%
Data Processing Software/Equipment	\$81,349.44	21.99%
Document Disposal	\$1,473.57	0.40%
Due/Memberships	\$1,060.00	0.29%
Education/Training	\$3,559.88	0.96%
Electric Light & Power	\$2,276.48	0.62%
Employee Mileage	\$650.15	0.18%
Fuels	\$857.86	0.23%
Liability Insurances	\$6,519.63	1.76%
Medical & Lab Supplies	\$23,621.11	6.38%
Natural & LP Gas	\$736.90	0.20%
Office Supplies	\$6,195.29	1.67%
Postage	\$2,256.85	0.61%
Telephone & Internet	\$2,833.39	0.77%
Workmens' Comp. Insurance	\$642.00	0.17%
Vaccines	\$1,767.31	0.48%
Vehicle Repairs	\$1,373.69	0.37%
<b>Expense</b>	<b>\$370,015.48</b>	<b>100%</b>
<b>Percent of BCHD Budget Used</b>		<b>98.60%</b>



## Revenues

Bremer County Health Department FY23  
July-June 2023

Revenue Category	FY23 YTD	% of Total
Emergency Response (COVID-19) Contracts	\$180,533.62	49.25%
Flu/Vaccines	\$3,899.00	1.06%
Foot Clinics	\$16,340.00	4.46%
Immunization Services Contract	\$10,160.00	2.77%
Local Public Health Services Contract	\$59,425.00	16.63%
Miscellaneous Reimbursement	\$232.87	0.06%
Public Health Emergency Preparedness Contract	\$60,963.09	16.63%
Transfer from Bremer County General Fund	\$35,000.00	9.55%
<b>Total BCHD Generated Revenue</b>	<b>\$366,553.58</b>	<b>100%</b>
<b>Percent of BCHD Budget Received</b>		<b>97.47%</b>



**CALL**  
(319) 352-0082

**VISIT**

403 3rd Street SE. Waverly, IA 50677

**FACEBOOK**

@BremerCountyHealthDepartment

**WEB**

<https://www.bremercounty.iowa.gov>

